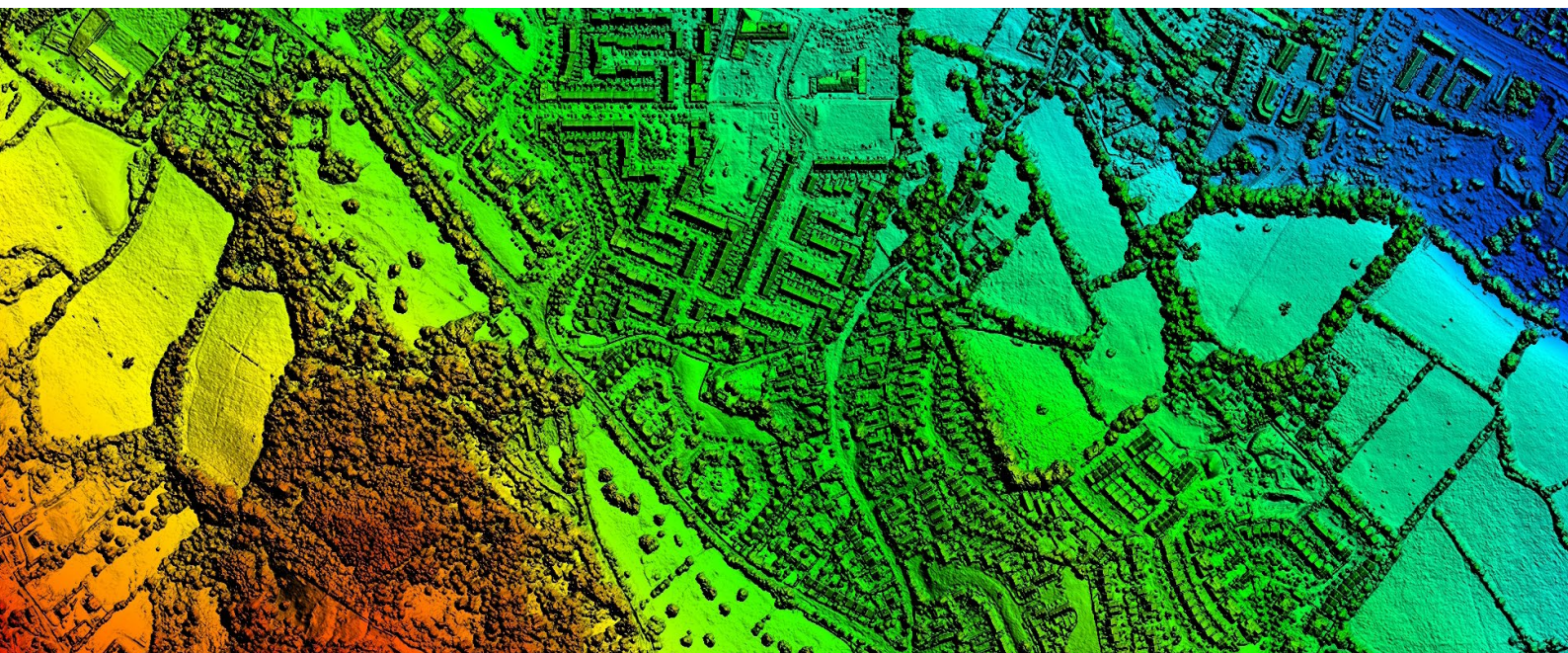


# DATA SHEET

Product: **Digital Surface Models**

Region: **Republic of Ireland**



**B**luesky is a market leader in the capture, production, exploitation, and delivery of geospatial datasets and services that have rapidly become critical tools in tackling the challenges of the modern world. Operating globally, Bluesky has offices in the UK, US, Ireland and India.

As a recognised specialist in the acquisition and processing of aerial photography and LiDAR, Bluesky uses the latest technology and an experienced technical team to produce innovative off-the-shelf and tailored products to meet the needs of organisations in a range of market sectors.

Bluesky's terrain datasets and 3D models support the acceleration and adoption of 3D applications and technologies in an age of smart cities, digital twins and virtual/augmented reality.

## Key Features

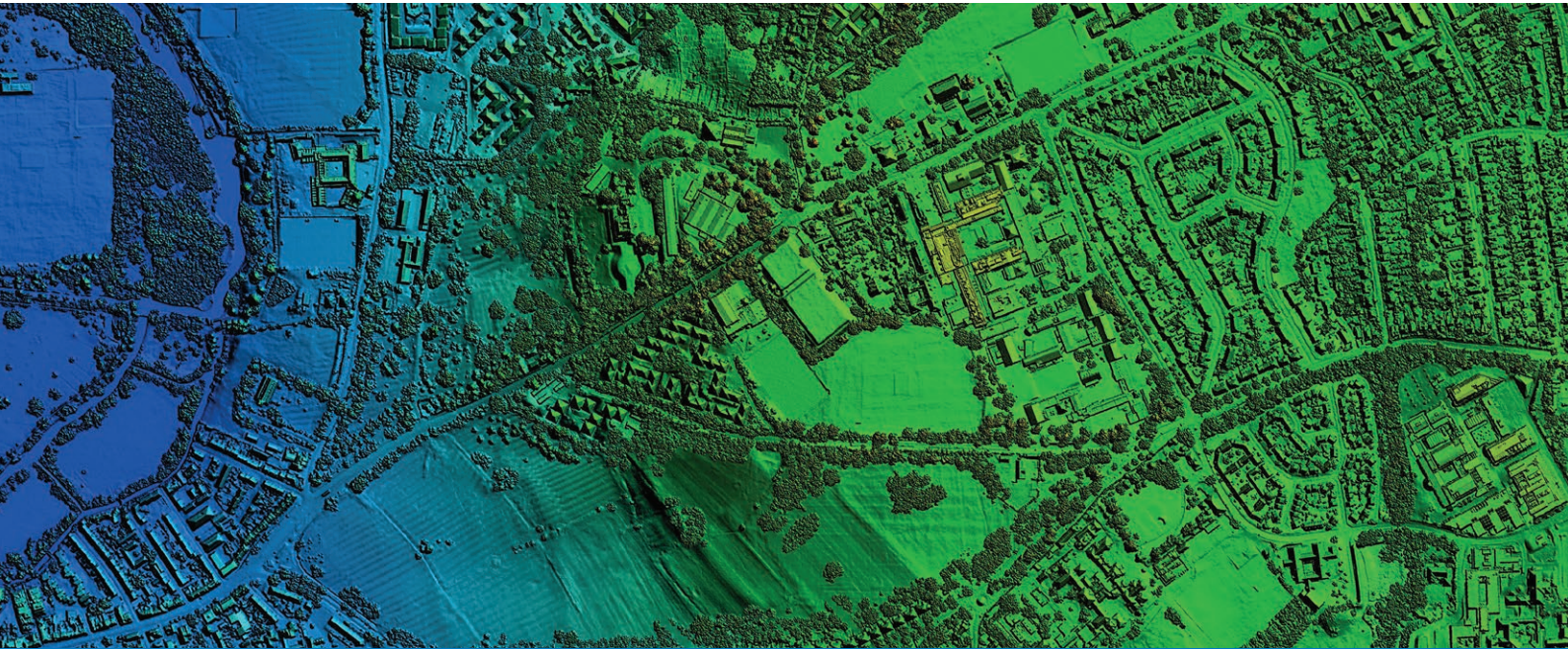
- Provides detailed measurements of the height of the earth's first surface
- Includes features such as buildings and vegetation
- National 25cm resolution coverage
- Immediate accessibility
- Available as part of our flexible subscription service for quick and cost effective access



Applications & Industries

- Visualisations
- Line of sight analysis
- Utilities
- Agriculture
- Urban forestry planning
- Vegetation mapping

Specification	
Resolution	25cm
Coverage	Republic of Ireland
Accuracy XY	± 1m rmse
Accuracy Z	± 1.5m rmse
Formats	Include: ASCII Grid, ASCII XYZ, DXF Point, GeoTiff
Standard Projection	Irish Transverse Mercator (ITM95)
Tile Size	2km x 2km (8,000 x 8,000 pixels)
Metadata	OGC compliant XML



At the time of publication all of the specifications were correct but are subject to change.

© Bluesky International Ltd.

